

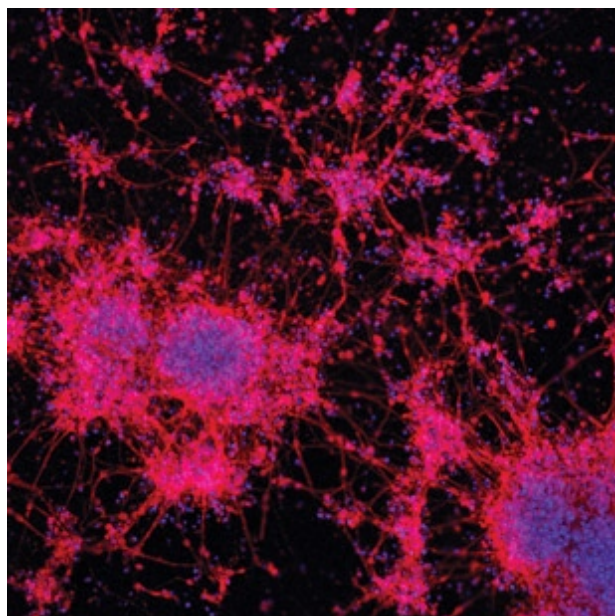


For General Stem Cell Culture

HyStem-C provides an excellent starting point for optimizing a matrix for stem cell culture since its composition can be easily tailored to find suitable matrix compositions. HyStem-C has *all the features of HyStem and includes Gelin-S (as the initial attachment factor)*. The ratios of HyStem's three components can be quickly altered to efficiently find the matrix formulation needed for the specific application.

HyStem-C consists of a hyaluronan-based, semi-synthetic matrix crosslinked with Gelin-S (thiol-modified denatured collagen). HyStem-C is ready for cell culture in three simple steps - reconstitute, mix, and use! HyStem-C will gel at room temperature within 30 minutes with no low temperature or low pH steps in its preparation.

HyStem-C is suitable for *in vivo* experimentation as well as *in vitro* stem cell culture.



hESC-derived neurospheres grown on HyStem-C™ (Courtesy of X. Wen, Clemson University).

Advantages

Semi-synthetic

Simple Optimization

Hyaluronan-Based Hydrogel

Excellent Lot-to-Lot Consistency

User-Controlled Stiffness and Composition

Suitable for *in Vitro* and *in Vivo* Experimentation